

1) Early 16" Composition Clergy Man - a Can't Break'em Compo ca: 1910; no craze & Orig Vestment, Collar & Hat. \$295

2) Unusual Closed Mouth 20" Goebel - lovely swivel head, mint bisque, body, Silky Antique Wig & big PW's! \$895

3) Delicate 16" Kestner '152' - flawless quality, scarce mold, orig. wig, plaster pate & fine Kestner jtd. body. \$495

4) 24" Beautiful Kestner Nun - striking All Orig.Doll, excel Pin-jtd. Body, seated height 16", perfect fingers. \$350

5) Rare Mint 14" B.P. '252' - early Stiff Wrist body, Factory Wig, quaint Orig Clothes, vivid bl. eyes. \$675

6) 24" Impressive Heubach '7246' Clo. Mo.Pouty - magnificent 14" cir head! Top Quality! Invis, prof. mend lower down rear neck edge, no harm. \$2500 just \$895



7) Choice 13" Lencis: Great Deco costumes incl. the Coats, stylish Hats & Shoes - the red with Book Bag & Fabric Label. An unplayed set! The Blue is \$850, the Red is \$950 or \$1650 for both! (see #9 & #12)

8) 18" Heirloom Handwerck '189' - scarce mold, flawless quality. Mint & All Original doll in every respect! \$675

9) see #7

10) Lovely 10" SFBJ Exotics - Factory Dressed complete w/Wigs, Headwear, glass eyes & all fine quality. \$215 each

11) Life Size 37" 'Cosmopolite' - by Handwerck w. 18" head! Plus huge Blue Sl. Eyes, great bisque, Orig. Handwerck chunky body w. old good repaint, in smart vintage clothing. An exceptional character! \$1395; Mint Steiffs-call 12) see #7

13) Choice 10.5" Kestner '260' Toddler - Starfish Hands! A mint 'little scamp', Factory Clothes & Wig, bl.eyes & great size! \$695

14) see #11



Matrix

Quality Antique Dolls by Mail

Return Privilege • Layaways

Member UFDC & NADDA

(212) 787-7279

P.O. Box 1410 NY, NY 10023

matrixbymail@gmail.com



14



15) Rare Brown Byelo - sgnd. 12" head, sl eyes, brown lids & fabric body/celluloid hands, elaborate pink Silk Vintage Ensemble; a prize! \$1495



16) Charming Pair of Pristine K*R 101's - 12" cabinet size 'Peter & Marie' in Matching Tailored Ensembles w Factory Wigs & Shoes, flawless bisque & No Wig Pulls! Ever so sweet! Only \$2495

17) Large Mint 12" Kestner All Bisque '211' - so impressive! Socket Head, Factory Wig & Pate, sl eyes, Clo Mo, period clothes. Outstanding! \$695



18) 15" Delightful SFBJ '251' French Toddler - bright eyes, deep dimples & Quiver Tongue, oily sheen, rich blond curls, Fully Jtd Toddler body in sweet charming old clothes. \$695



19) Vibrant 12" Gebruder Heubach Dancing Lady - mint & sgnd., perf. Quality with gold decorative details! \$250



20) Two Generation 20" Kestner '129' w Wardrobe - All Original - Wig to Leather Shoes, sgnd. body; Plus six Second Generation Dresses, Hats, Patterns & Accessories in stunning decoupage Trunk! A time capsule treasure. \$895.



21) 11" Two-Face Infant Character - one side Smiling w Tongue, Sl. Eyes, other face Asleep w Mld. Closed Eyes! Orig Body & Factory Clothes. Rare \$850



22) Rare 12" Two Face Character - socket head, compo body, Smiling Face w Clo Mo, Gl Sl Eyes - the other side has Cranky Frown & crying lips. \$895



23) Finest All Original Mint Byelo - 13" long Kestner quality w Orig Sgnd Body, perfect fingers & intricate Antique Baby dress in layers. Precious \$250

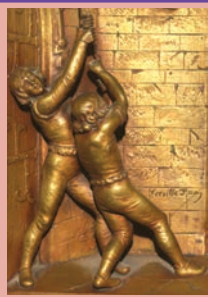


24) Grand Pair of 12" Heubach Piano Babies - both sgnd.& stunning. Near mint showpieces only \$450 the pair! Will separate.





25) Very Pretty 19" Tete Jumeau - fully sgnd., vivid blue PW's, creamy bisque, mint French hh wig & Jumeau body w Coil, tiny mend rear rim, stunning custom Ensemble. \$3500 just \$1850



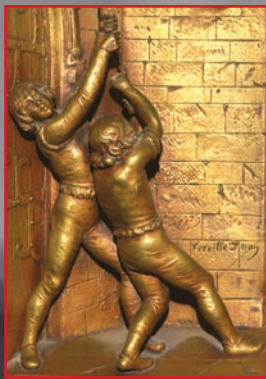
Matrix

(212) 787-7279
P.O. Box 1410
NY, NY 10023

Quality Antique Dolls by Mail
Return Privilege • Layaways
Member UFDC & NADDA
matrixbymail@gmail.com



26) An Illusive 20" Closed Mouth Jullien Bebe - early 1890's mark; She's a Portrait Style Bebe w rich & round Blue PW's, lovely tender bisque, shaded lids, mint Mohair Curls, plus most lovely Vintage Couture w. Matching Leather Shoes. \$3200



27) Breathtaking 24" Bebe Schmitt in the Grand Manner - Rare beauty w immaculate pure bisque, dewey sheen, perfect sculpting, dreamy Blue PW's beneath shaded eyelids; Orig Stiff Wrist Schmitt Body, mint french hh wig plus handmade glistening Silk Couture in the high style with brimmed Presentation Bonnet. A pristine showpiece! \$14,500



28) 19" Rare Brown 1880's Halbig '739' - supermodel, Factory Wig & Body, quality color bisque, brown PW's, in wonderful fancy Silk Ensemble w Pinafore & Wired Bonnet. Luscious luxury! \$2250
29) see #28



30) Stunning 30" Pre-1900 Kestner Closed Mouth - such fine pale bisque with its gentle blush, gorgeous ice blue eyes, romantic Hip Length French hh Tresses, chunky Stiff Wrist early body in her splendid high style Victorian Ensemble. Tremendous rare 'size 18'! \$2500



31) Early All Bisques - LEFT: 6.5" Kestner w. Tassled Blue Bootines & Socket Head - bl. sl. eyes, Closed Mouth & vintage layered attire. \$1595; RIGHT: 6.5" Halbig Closed Mouth w Socket Head, orig wig, brn. sl. eyes, Brown Over the Knee Stockings in vintage Drop Waist layers. \$1495

