



1) 14" Rare 'Bru Face' Cabinet Name Doll 'ELSA' - An angel with blue PWs, early Square Teeth, pretty bisque, mint antique Mohair Hip Length Tresses, adorable pink vintage clothes and Stiff Wrist Body. A bon-bon! \$1650




Matrix
 (212) 787-7279
 P.O. Box 1410
 NY, NY 10023
 Quality Antique Dolls by Mail
 Return Privilege • Layaways
 Member UFDC & NADDA
 MasterCard VISA PayPal
 matrixbymail@gmail.com



2) PARIS BEBES! This 23" Danel et Cie 'Paris Bebe' Mariner - has her Original Period Nautical Dress, Shoes, Wig, and even the neck plug for the Eiffel Tower body! She has enormous beaming blue PWs, glistening bisque & vivid coloring... loving her little 'Size 1' friend! (see #5). \$3800



3) Magnificent 18" Vichy Violinist in Original Clothes & Wig - your other fashions will adore this handsome troubadour with his Bru Era bisque head as he 'serenades' (over wound) them with his Original Violin & Bow. Drenched in his fine Original Silk Clothes & Plumed Hat he strikes a seductive pose lounging casually onto one hip. \$4500



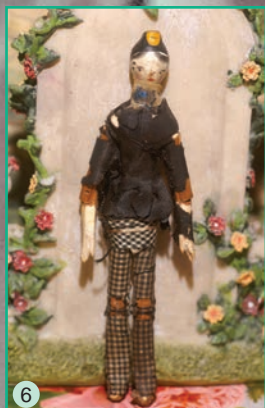
4) 18" Early Simon Halbig '908' Closed Mouth - mint 1888 French Export treasure of flawless quality, glowing PWs, Bru Tongue & early Solid Crown. Plus gorgeous mint Schmitt type Body, heirloom clothes & Factory Mohair Wig. The ultimate! \$3250



5) Super Rare 10" Brown 'Size 1' Danel et Cie 'Paris Bebe' - when will you see another?! Sgnd. Head, Closed Mouth, PWs, pc'd ears, Original Body incl. neck plug & Cork Pate. Pretty Antique Leather Shoes, French HH Wig. A special treat for the 'black doll' or 'Size 1' collector! \$4200



6) Extremely Rare 3.75" Tuck Comb Gentleman ca: 1820 - with unusual painted on ears, frail. Orig. Clothes feature rarely seen checkered silk Stove Pipe Pants. A wooden gem for your doll house or cabinet. \$1495



7) 22" 1840's Pressed China 'Damenkoph' - Rich Pink Tint matte finish & darkest 'brown' hair. She is KPM style with Winged Hair Panels & Coiled Bun high up in back exposing her lovely long neck. Elegant old gowns & body with long glazed arms. A Master Portrait. \$1895