

# MATRIX CARNIVAL OF DOLLS

(212) 787-7279

matrixbymail@gmail.com



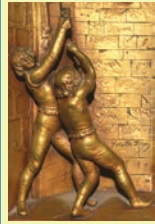
- 1) Lenci Style Winker - 13" A/O clean character w. cigarette! \$350
- 2) Early Disney 15" Pluto - VGC w. tongue & authorized Disney Label \$ 250. Mint 1948 Puzzy - All Original clothes plus Hat w. Button! \$275
- 3) Schoenhut Felix the Cat - 8" tall w.Label & Ears.\$250 Pinocchio - 11" & great condition. \$125
- 4) Scarce Scho'Mule - (not donkey!) G.E. plus ears,tail plus Schoenhut Clown! \$250
- 5) Rare 18" Raggedy Ann - Mint 1940's 'Georgene' multi-color legs & dress \$450
- 6) Outstanding French Arabian Pair - hand painted silk faces, 20" & 26" tall, A/O Clothes, Paris Labels. Exotiques! \$750

- 7) Stunning 24" Bebe Steiner - gorgeous quality, blue PWs, slight O/M, orig. Stiff Wrist Body w. Caduceus mark! \$2750
- 8) Opulent 26" Jumeau Cavalier - splendid quality, dazzling blue PW Sl. Eyes, O/M, dashing silk suit. \$1595
- 9) EffanBee 'Clippo' Mint in Box - all orig. w. brochure. \$175
- 10) Scarce 12' Googly w. Lever Eyes - Factory Orig. incl. shoes & fur wig. Mint.\$895. Heubach Winker - 6.5" mint scamp in factory clothes! \$550
- 11) 14" Schuco 'Yes/No' Monkey - beautiful working condition. \$225. Reclining Steiff Tiger - excel cond. ca. 1950,12"across \$110.





12



*Matrix*

(212) 787-7279

matrixbymail@gmail.com

*Summer Projects*

12) All Original 22" Bru 'Smiler' in 'Robe d'Ete' - mint Factory Wig & Pate. Very fine hl. Feet & leg gussets need work. Perf hands! Stunning gracious beauty. \$2995

13) Rare Small Jumeau 'Maiden and the Mouse' - All Original, Mint head. Only 17" overall! Two British museum provenances. Needs repair. Small luxurious display piece. Just \$2850

14) Luxurious Polichinelle - in magnificent Original Silk Costume, glass eyes look slightly down, true character face artistry, molded smile, extremely rare find. \$1650



13



14



14



13

15) 21" Jumeau 'Bird Catcher' - such a fantasy! Complete w Net & Bird of Paradise. Mint head, fingers wig/pate. Needs tinkering. Only \$2500

16) Incredible 37" Fully Jointed Wood Mannikin - artistic relic, incl. jtd waist, ankles & hands - missing right lower arm. Romantic magnificence. \$1200



15



16



17



18



19



20

17) French Mannequin Head- attrib. Bru; original paint, Glass Eyes, 9" tall, No touch-ups! Museum provenance \$895

18) 4.5" Wood Body 1840'S China - mint head, very fine Orig. Clothes, missing right arm, More than half off just \$750;

3.75" Tiny Snood Parian - pink Snood, rare Black Hair, one foot broken, Original Clothes. \$495

19) 12" Early French Fashion - orig. Wig/Body, lacks lower legs & one hand, lovely Jewel Eyes, & fitted layers. \$395

20) Cabinet Size Mystery House - just 14" by 15" and only 6" deep! 4-rooms, glass windows, Orig. Papers in & out, rare Georgian style! \$1495



# Summer Sewing Fun!



## Matrix

(212) 787-7279  
P.O. Box 1410  
NY, NY 10023

Quality Antique Dolls by Mail  
Return Privilege • Layaways  
Member UFDC & NADDA  
matrixbymail@gmail.com



21) Unusual Fr. Trade  
13.5" Smiling Poupée  
- ice blue PWs, orig.  
pate, wig underwear  
& shoes, A special  
face! \$1650

22) Lovely 21" Blue  
Eyed Steiner - mint  
French HH Ringlet  
Wig, invisible  
restoration upper  
right quadrant. Mint  
Stiff Wrist Body w.  
pretty underwear &  
antique shoes..plus  
Closed Mouth! \$1595



23) 19" Unusual Jumeau  
Closed Mouth - on the  
Fouquet et Douville  
patent, bl PWs, prof.  
invisible forehead airbrush,  
orig. body. Just \$1295

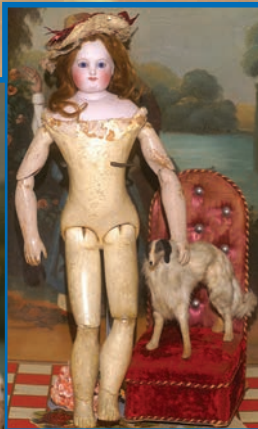
24) 14" ABG '911' French  
Trade Child Fashion -  
early 1890 Clo/Mo Model,  
swivel neck with French  
Coil and Signed rim and  
plate, huge PW eyes too. A  
bon-bon! \$795

25) Very Rare 16"  
Blampoix Senior Poupée  
- Early, 1860's Signed  
model, mint head, wig, blue  
PWs, jointed wooden arms  
& unusual kid over wood  
body. So important &  
beautiful. Call.

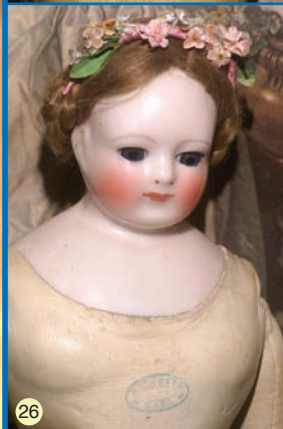
26) 19" Mint Blampoix  
China w. Rare Wired Eyes  
- Pink Tint; Undies, shoes  
& socks, eyes open & close  
by wire mechanism in  
Mint Signed Body! \$4600



25



22



26



23



27

27) 18" Early Fashion Style Kestner  
- swivel neck w. early square teeth  
sm.flaw, rich brows \$250;  
14" Early French Trade- bl. PWs,  
mystery mark! \$225. Both clean  
good body/bisque arms.

28) 14" Bru Smiler w. Enigma  
Wooden Body - orig. pate, wig,  
sparkling blue PWs. Invisibly  
mended neck hl, fully jointed body.  
Just \$2800



28



24