

1) 20" All Original Kestner 161 - mint doll of flawless quality, **Factory Signed Body, Wig & Pate** plus charming period Clothes & Shoes - A beauty! \$695

2) 15" Early Topsy-Turvy ca: 1910 - one of a kind Americana, great detail and bright colors, **Oil Painted Features**, expert quality & tailoring, all near mint! \$450

3) 16" Neapolitan Creche 'Philosopher' - a fabulous Glass Eye Character you probably don't have - in Original Clothes and excellent condition. \$895

4) 7" Doll House Couple in Original Clothes - orig. bodies, perf. limbs; she in silk w. orig. wig; he w. molded mustache. \$425

5) Mint 22" Closed Mouth Steiner Bebe w. Rare Blue Lever Eyes - scarce Fre. A Bebe. Signed Eyes, flawless quality, Mint Stiff Wrist **Signed Body & Orig. Mohair wig**, lovely Silk Attire. A showpiece! (See #21) A rare one! \$4500

6) Large 7" Factory Original Mignonette - wonderful French Clothes, slender French body, uncut **Orig. Wig**, set glass eyes & **Closed Mouth** - \$1250

7) Wonderful French Delicacy Shoppe - for the cabinet or on the wall! Just 15" by 18" yet loaded w. **30 Original Miniature French Tins & Packages**; great graphics and **French Trade Doll**; all mint w. Provenance - \$1250

8) 17" Etienne Denamur Bebe by Jumeau - transitional open mouth example, w. vibrant **PW Eyes** and **pretty Smile**; quality satin bisque, w. **Orig. Wig, Signed Jumeau Body w. Coil**, and orig pate. A special example. Just \$1295

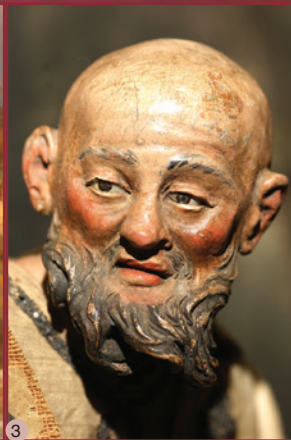
9) Shirley Antoon 10" Cabinet Schmitt Bebe - exquisite artistry, antique blue **PWs**, Mohair Wig & Silk Clothes. \$395

10) Diminutive 11" Oil Painted Rag - ca:1910, uniquely personable, very pretty colors, 5-part fabric body and **Orig. Clothes** - all mint sweetie! \$495

11) Unusual 16" Chase Boy - Very Special! Big Puppy Dog **Brown Eyes**, exceptional expression, gently worn. **Original Pink Striped Sailor Suit** - Classic Americana. \$575

12) 17" Italian Felt Alma - a Lenci type **Deco Child** in her **Orig. Outfit** w. Mohair Wig & Matching Bow. Very gentle age. \$195

13) Rare Large Size 12" AM 241 Googly - What a supersize head! w. **Original Body, Wig & Clothes**; concealed expert repair so not \$4000... just \$1650





14



15

14) Victorian Valentine ca: 1875 - with silk fringe, silk ribbon, die-cut, and printed padded silk sentiment. Just 4" by 6" and unhandled! \$49

15) Rare French Closed Mouth 'Pauline' - no touch ups! The 1860's Mache with Glass Eyes, Original Patina, Uncut Inset Wig, fabric body, leather arms. Ever so stately \$1395

# Matrix

(212) 787-7279  
P.O. Box 1410  
NY, NY 10023

Quality Antique Dolls by Mail  
Return Privilege • Layaways  
Member UFDC & NADDA

[matrixbymail@gmail.com](mailto:matrixbymail@gmail.com)



15



16



16) Mint and All Original 20" Jumeau 'Mariner' - Closed Mouth w. Blue PWs; fully signed on both head and Stiff Wrist Body, mint Factory Wig, Pate & Coil, wearing classic Nautical Ensemble and Signed Shoes. \$3600

17) 18" Brown Eye 1850's China w. Painted Lower Lashes - and Brown Eyebrows! Great orig. body w. Porc.Arms & Flat Soled Shoes. \$1395



17

18) Factory Original 14" Roulet et Decamps 'TA-TA' - Iconic 'mechanical' French Comic Character from the turn of the century with Glass Eyes, as shown in the Roulet et Decamps catalog. Historic. \$1250



18



19



20



21

19) Rare 15: Heubach 8368 Character - Closed Mouth, round face, round 'shoe button' eyes, Perfect Flocked Hair, good bjb w. Period Clothes & Shoes - \$1250

20) Rare 20" Bear w. Musical 'Chimes' - creamy long hair bear, original eyes, plays Music Box Chimes when torso is pressed. \$795. 11" Smallest Size Schoenhut Toddler - in Original Sailor Suit, orig. paint, wig as found, just \$375



22



23

21) 22" Mint Wire Eye Steiner - (see photo #5) \$4500

22) 18" Mint and Original Oil Painted Rag - brilliant 'starry eyed' features, great color, no repaint, fabulous Original Clothes and Shoes! \$895

23) All Original Kestner Innocent - a loving '214' Character w/ Big soulful eyes, tender bisque, silken mohair wig & Fine Original Clothes. \$750



24



25



26



24) All Original 20" Jumeau Mariner (see #16) - \$3600

25) All Original 18" EJ Bebe in Silk Jumeau Factory Couture - Satin pure bisque w. Sparkling Blue PWs, Soft Brows, mauve Shaded Lids, desirable Orig. Lambswool Wig - Body - and Factory Champagne Silk Couture w. Saucy Bustle Back Jacket and Matching Chapeau! She is the ultimate! \$6800



27

27) Rare Gustave Vichy 'Waltzing Parisienne' - A 21" museum class Blue Ribbon Winner -Mint head, Original Elaborate Factory Wig & probably Original Clothes too includes her Hair Comb, Lorgnette and Fan. The original mechanism needs tinkering. A historic & stunning display of aristocratic Paris - the luxury, style and fashion. Special price. \$7500



26



27



28

Matrix

(212) 787-7279

matrixbymail@gmail.com

26) Mint 17" French Carton 'Farceur' - This important Polichinelle inspired character ca: 1895 in his Original Clown Suit is bound to amuse your bevy of lovely ladies! His amazing facial modeling and artwork is the classic portrait of French wit! So Rare! \$1495



29



28) 22" Pink Tint Rare Brown Eye 'Kinderkopf' ca:1840 - rich facial coloring, Brushstroke Hair, wonderful vintage body & clothing, typical crack on plate under clothes. Only half price at \$850

29) Outstanding Wiggled Lippert & Hass of Schlaggenwald Lady - a rare hand pressed ethereal beauty with Pink Tint and Watery Glaze plus Mint Original Wig so rare on Chinas. Includes Tailored Gown, Leather Boots and she can sit too. The exceptional! \$2750