

Matrix

(212) 787-7279
P.O. Box 1410
NY, NY 10023

Quality Antique Dolls by Mail
Return Privilege • Layaways
Member UFDC & NADDA
matrixbymail@gmail.com



1) An Early Gottschalk Townhouse – “Blue Roof,” orig. papers inside and out, glass windows w. orig. curtains & valances, upper balcony and dormer, **Glass Front Bays** with flooring - so elegant! 19” tall, 12” across, 10” deep; \$1600 (unfurnished)



2) 17” Elaborate Decorated Parian Fashion - very elaborate & high beaded ruffle w. Painted bodice too! pc'd.ears, lovely color, exquisite 2-part tiered **Silk Vintage Fashion Gown** w. silk slippers & Original Body- so stately. \$1695



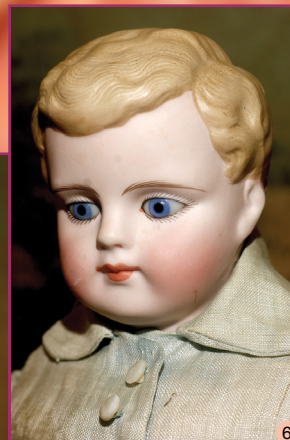
3) 'Lysette' - Stunning 30” Jumeau Portrait Fashion - seated doll height 26” tall; immaculate bisque, dreamy blue PWs. shaded lids, well tailored **Vintage Fitted Gown**, orig. under layers, shoes & socks plus **Silk Wrap, Leather Gloves & excel. Kid Body** no leaks; inclds. elegant chair not shown. Unearthly beauty! \$6700



4) An aura of rarity surrounds this 11” Continental Wooden Lady w. Decorated Torso & glass eyes, mint elaborate Ornate Wig, w. Tri-Jointed Arms, stiff hips. An elegant antiquity ca:1800 (some age) \$3500



5) Rare 15” Brown Hair China Male - someone different! Brushwork Kinderkopf style Napoleonic hair, molded ears, distinctive face, orig. body in **Vintage Waistcoat Ensemble** w. Hat. \$1695



6) 18” Very Rare Signed Halbig Gentleman ca:1870 - blue PW eyes, **Closed Mouth**, side part Blond Hair, orig. **Blue Linen Suit & Leather Shoes!** \$3200

